

# Access Database Manager Documentation

---

Open Database.....	5
Close Database .....	5
Compact Database.....	5
Repair Database.....	5
Open Database Relations .....	5
Edit Database Relations .....	5
New Database Relation .....	5
Remove Database Relation .....	5
Open Database Properties .....	6
Edit Database Properties .....	6
New Database Property.....	6
Remove Database Property .....	6
Add Predefined Database Property .....	6
Open Table .....	6
Edit Table .....	7
Rename Table.....	7
New Table .....	7
Remove Table .....	7
Copy Table .....	7
Design Table .....	7
Edit Table Field.....	8
Edit Field Properties.....	8
New Table Field.....	8
Insert Table Field .....	8
Change Order of Table Fields .....	8
Remove Table Field .....	8
New Table Field Property .....	8
Remove Table Field Property.....	9
Add Predefined Table Field Property.....	9
Open Table Properties.....	9
Edit Table Properties .....	9
New Table Property .....	9
Remove Table Property.....	9
Add Predefined Table Property.....	10
Open Table Indexes.....	10
New Table Index .....	10
Remove Table Index .....	10
Open Query .....	10
Rename Query.....	10
New Query .....	10
Remove Query.....	10
Copy Query .....	11
Design Query.....	11
Open Query Properties .....	11
Edit Query Properties .....	11
New Query Property.....	11
Remove Query Property.....	11
Add Predefined Query Property .....	11
Parse Query .....	12



---

Import Tables and Queries .....	12
Link Tables.....	12
Create Database Documentation .....	12
Open Query Analyzer.....	12
Open Script.....	13
Script Commands .....	13
AddTableField.....	13
ChangeTableFieldSize .....	13
ChangeTableFieldType .....	13
CloseDatabase .....	14
CompactDatabase.....	14
CopyTable .....	14
CopyTableStructure .....	14
CreateQuery .....	14
CreateTable .....	14
DocumentAllQueries.....	15
DocumentAllTables .....	15
DocumentCompleteDatabase .....	15
DocumentDatabase.....	15
DocumentQuery .....	15
DocumentTable .....	16
ExportCustomQueryData .....	16
ExportQueryData .....	16
ExportTableData .....	16
ImportQuery .....	16
ImportTable .....	16
LinkTable .....	17
OpenDatabase.....	17
RemoveDatabaseProperty .....	17
RemoveQuery.....	17
RemoveQueryProperty .....	17
RemoveRelation .....	17
RemoveTable .....	17
RemoveTableField .....	17
RemoveTableFieldProperty .....	18
RemoveTableIndex .....	18
RemoveTableProperty.....	18
RenameQuery.....	18
RenameTable.....	18
RepairDatabase.....	18
RunSQL.....	18
SetDatabaseProperty .....	19
SetQueryProperty .....	19
SetQuerySQL .....	19
SetRelation .....	19
SetTableFieldProperty.....	20
SetTableIndex.....	20
SetTableIndexDuplicatesOK.....	20
SetTableIndexNoDuplicates.....	20

---

SetTablePrimaryIndex.....	20
SetTableProperty.....	21

## Open Database

Choose File > Open Database from database menu or choose Open Database item from the list of tables shortcut menu or list of queries shortcut menu.

## Close Database

Choose File > Close Database from database menu or choose Close Database item from the list of tables shortcut menu or list of queries shortcut menu.

## Compact Database

Choose Tools > Compact from the database menu.

## Repair Database

Choose Tools > Repair from the database menu

## Open Database Relations

Choose Database Relation from the database tool bar.



## Edit Database Relations

First open the database relations.

Select relation you want to edit from the list on the left side. Now you can edit selected relation on the right side.

For easy editing of Attributes property you can use shortcut menu.

## New Database Relation

First open the database relations.

Choose Add New Relation from the database relations list shortcut menu.

## Remove Database Relation

First open the database relations.

Right click relation you want to remove.

Choose Remove Relation from the database relations list shortcut menu.

## Open Database Properties

Choose Database Properties from the database tool bar.



## Edit Database Properties

First open the database properties.

Select property you want to edit from the list on the left side. Now you can edit selected property on the right side.

## New Database Property

First open the database properties.

Choose Add New Property from the database properties list shortcut menu.

## Remove Database Property

First open the database properties.

Right click property you want to remove.

Choose Remove Property from the database properties list shortcut menu.

You can remove only not built-in properties.

## Add Predefined Database Property

First open the database properties.

Choose Add Predefined Property > Name of property.

There is a list of known properties not found in the list of properties on the left side.

## Open Table

Select table you want to open from the list of tables.

Click Open button or choose Open Table from the list of tables shortcut menu.

## Edit Table

You can edit table after you open it.

For editing you can use standard tools from the tool bar.



There are three more tools on the right side of the tool bar:

Hide column

Freeze column

Export (Exporting table to CSV file)

## Rename Table

Choose Rename Table from the list of tables shortcut menu.

## New Table

Click New button or choose Add New Table from the list of tables shortcut menu.

## Remove Table

Select table you want to remove from the list of tables.

Choose Remove Table from the list of tables shortcut menu.

## Copy Table

Select table you want to copy from the list of tables.

Choose Copy Table from the list of tables shortcut menu.

Question dialog appears. If you want to copy only a structure of the table then click NO. If you want to copy data too click YES.

## Design Table

Select table you want to design from the list of tables.

Click Design button or choose Design Table from the list of tables shortcut menu.

## Edit Table Field

First open design table form.

Select field you want to edit from the list on the left side. Now you can edit selected field on the right side.

## Edit Field Properties

First open design table form.

Select field and property you want to edit from the lists on the left side. Now you can edit selected property on the right side.

For easy editing of Attributes and Type properties you can use Value edit shortcut menu.

## New Table Field

First open design table form.

Choose Add New Field from the fields shortcut menu.

## Insert Table Field

First open design table form.

Choose Insert New Field from the fields shortcut menu.

## Change Order of Table Fields

First open design table form.

Select field you want to move up or down. Choose Move Up or Move Down from then fields shortcut menu.

## Remove Table Field

First open design table form.

Select field you want to remove. Choose Remove Field from the fields shortcut menu.

## New Table Field Property

First open design table form.

Select field you want to add property.

Choose Add New Property from the properties shortcut menu.

## Remove Table Field Property

First open design table form.

Select field you want to remove property.

Right click property you want to remove.

Choose Remove Property from the properties shortcut menu.

You can remove only not built-in properties.

## Add Predefined Table Field Property

First open design table form.

Select field you want to add predefined property.

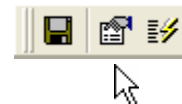
Choose Add Predefined Property > Name of property.

There is a list of known properties not found in the list of properties on the left side.

## Open Table Properties

First open design table form.

Choose Table Properties from the design table tool bar.



## Edit Table Properties

First open the table properties.

Select property you want to edit from the list on the left side. Now you can edit selected property on the right side.

## New Table Property

First open the table properties.

Choose Add New Property from the table properties list shortcut menu.

## Remove Table Property

First open the table properties.

Right click property you want to remove.

Choose Remove Property from the table properties list shortcut menu.

You can remove only not built-in properties.

## Add Predefined Table Property

First open the table properties.

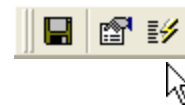
Choose Add Predefined Property > Name of property.

There is a list of known properties not found in the list of properties on the left side.

## Open Table Indexes

First open design table form.

Choose Table Indexes from the design table tool bar.



## New Table Index

First open the table indexes.

Choose Add New Index from the table indexes shortcut menu.

## Remove Table Index

First open the table indexes.

Right click index you want to remove.

Choose Remove Index from the table indexes shortcut menu.

## Open Query

Select query you want to open from the list of queries.

Click Open button or choose Open Query from the list of queries shortcut menu. This will run a query. If the query type is SELECT than table of result will open. You can edit this table.

## Rename Query

Choose Rename Query from the list of queries shortcut menu.

## New Query

Click New button or choose Add New Query from the list of queries shortcut menu.

## Remove Query

Select query you want to remove from the list of queries.

Choose Remove Query from the list of queries shortcut menu.

## Copy Query

Select query you want to copy from the list of queries.

Choose Copy Query from the list of queries shortcut menu.

## Design Query

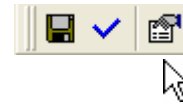
Select query you want to design from the list of queries.

Click Design button or choose Design Query from the list of queries shortcut menu.

## Open Query Properties

First open design query form.

Choose Query Properties from the design query tool bar.



## Edit Query Properties

First open the query properties.

Select property you want to edit from the list on the left side. Now you can edit selected property on the right side.

## New Query Property

First open the query properties.

Choose Add New Property from the query properties list shortcut menu.

## Remove Query Property

First open the query properties.

Right click property you want to remove.

Choose Remove Property from the query properties list shortcut menu.

You can remove only not built-in properties.

## Add Predefined Query Property

First open the query properties.

Choose Add Predefined Property > Name of property.

There is a list of known properties not found in the list of properties on the left side.

## Parse Query

You can find out if a query has correct SQL command before you save it.

Choose Parse Query from design query tool bar.



## Import Tables and Queries

Choose File > Get External Data > Import from database menu or choose Get External Data > Import from tables or queries shortcut menu.

Select tables and/or queries you want to import and click Import button.

## Link Tables

Choose File > Get External Data > Link Tables from database menu or choose Get External Data > Import from tables shortcut menu.

Select tables you want to link and click Link button.

## Create Database Documentation

You can simply create text documentation about all database properties, tables and queries.

Choose File > Documentation. Dialog will appear. Select items you want to include in documentation and click OK button.

## Open Query Analyzer

Choose Tools > Query Analyzer from the database menu.

The Query Analyzer remembers last query.

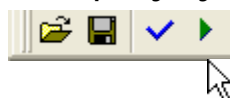
Now you can type a query and/or open query from a file or save query to a file.

Before you run query you can parse a query by choosing Parse Query from the query analyzer tool bar or from shortcut menu.



The number of rows affected will appear in the message field.

After that you can run a query by choosing Run Query from the query analyzer tool bar.



If a query type is SELECT table with query result will appear.

## Open Script

Choose Tools > Script from the database menu.

Script allows you make a more database changes by one click.

You can open script from a file or save script to a file.

You can run a script from the external application. You have to run

AccDBMan with paramater: `/cmd "script file name"`

## Script Commands

If any parameter contains space character it must by quoted.

Line of comment starts by ' (apostrophe) or # or /

### **AddTableField** tableName, fieldName, dataType, [fieldSize]

Add new field to table definition.

tableName, text: table name

fieldName, text: field name

dataType, text (Boolean, Byte, Currency, Date, Double, GUID, Integer, Long, LongBinary, Memo, Single, Text): data type of field

fieldSize, number: define size of field if field type is Text.

### **ChangeTableFieldSize** tableName, fieldName, fieldSize

Change size of field only if field data type is Text.

tableName, text: table name

fieldName, text: field name

fieldSize, number: field size

### **ChangeTableFieldType** tableName, fieldName, dataType, [fieldSize]

Change data type of field.

tableName, text: table name

fieldName, text: field name

dataType, text (Boolean, Byte, Currency, Date, Double, GUID, Integer, Long, LongBinary, Memo, Single, Text): new data type of field

fieldSize, number: define size of field if field type is Text.

## CloseDatabase

Close database file

## CompactDatabase databaseFile

Compact database.

databaseFile, text: database file name

## CopyTable srcTableName, destTableName

Copy table structure and data from table to the new table

srcTableName, text: name of source table

destTableName, text: name of new table

## CopyTableStructure srcTableName, destTableName

Copy table structure of table to the new table.

srcTableName, text: name of source table

destTableName, text: name of new table

## CreateQuery queryName, SQL

Create new query.

queryName, text: query name

SQL, text: SQL command

## CreateTable tableName, fieldName, primaryIndex, fieldType, [fieldSize]

Create table with.

tableName, text: table name

fieldName, text: name of first field

primaryIndex, boolean (True, False): define if field has primary index

fieldType, text (Boolean, Byte, Currency, Date, Double, GUID, Integer, Long, LongBinary,

Memo, Single, Text): data type of field

fieldSize, number: define size of field if field type is Text.

**DocumentAllQueries** fileName, [append]

Create text documentation of all database queries.

fileName, text: name of destination file

append, boolean (True, False): Set True if you want append this documentation at the end of existing documentation in the specific file. Default value = False.

**DocumentAllTables** fileName, [append]

Create text documentation of all database tables.

fileName, text: name of destination file

append, boolean (True, False): Set True if you want append this documentation at the end of existing documentation in the specific file. Default value = False.

**DocumentCompleteDatabase** fileName, [append]

Create text documentation of database properties and all database tables and all database queries.

fileName, text: name of destination file

append, boolean (True, False): Set True if you want append this documentation at the end of existing documentation in the specific file. Default value = False.

**DocumentDatabase** fileName, [append]

Create text documentation of database properties.

fileName, text: name of destination file

append, boolean (True, False): Set True if you want append this documentation at the end of existing documentation in the specific file. Default value = False.

**DocumentQuery** queryName, fileName, [append]

Create text documentation of query.

queryName, text: query name

fileName, text: name of destination file

append, boolean (True, False): Set True if you want append this documentation at the end of existing documentation in the specific file. Default value = False.

**DocumentTable** tableName, fileName, [append]

Create text documentation of table.

tableName, text: table name

fileName, text: name of destination file

append, boolean (True, False): Set True if you want append this documentation at the end of existing documentation in the specific file. Default value = False.

**ExportCustomQueryData** query, fileName

Export custom SELECT query to CSV file.

query, text: SQL SELECT command

fileName, text: destination CSV file name

**ExportQueryData** queryName, fileName

Export SELECT query to CSV file.

queryName, text: table name

fileName, text: destination CSV file name

**ExportTableData** tableName, fileName

Export table to CSV file.

tableName, text: table name

fileName, text: destination CSV file name

**ImportQuery** databaseFile, queryName

Import query from another database file.

databaseFile, text: database file name

queryName, text: query name

**ImportTable** databaseFile, tableName

Import table from another database file.

databaseFile, text: database file name

tableName, text: table name

**LinkTable** databaseFile, tableName

Link table from another database file.

databaseFile, text: database file name

tableName, text: table name

**OpenDatabase** databaseFile

Open database file. You have to open database first for most of commands.

databaseFile, text: database file name

**RemoveDatabaseProperty** ropertyName

Remove database property.

propertyname, text: property name

**RemoveQuery** queryName

Remove query.

queryName, text: query name

**RemoveQueryProperty** queryName, propertyName

Remove query property.

queryName, text: query name

propertyname, text: property name

**RemoveRelation** relationName

Remove database relation.

relationName, text: relation name

**RemoveTable** tableName

Remove table.

tableName, text: table name

**RemoveTableField** tableName, fieldName

Remove table field.

tableName, text: table name

fieldName, text: field name

**RemoveTableFieldProperty** tableName, fieldName, propertyName

Remove table field property.

tableName, text: table name

fieldName, text: field name

propertyname, text: property name

**RemoveTableIndex** tableName, fieldName

Set table primary index.

tableName, text: table name

fieldName, text: field name for primary index

**RemoveTableProperty** tableName, propertyName

Remove table property.

tableName, text: table name

propertyname, text: property name

**RenameQuery** oldQueryName, newQueryName

Rename query.

oldQueryName, text: Old query name

newQueryName, text: New query name

**RenameTable** oldTableName, newTableName

Rename table.

oldTableName, text: Old table name

newTableName, text: New table name

**RepairDatabase** databaseFile

Repair database.

databaseFile, text: database file name

**RunSQL** "SQL command"

Run SQL Command.

**SetDatabaseProperty** propertyName, dataType, value

Set database property. If property does not exist SetDatabaseProperty will create it.

propertyName, text: property name

dataType, text (Boolean, Byte, Currency, Date, Double, GUID, Integer, Long, LongBinary, Memo, Single, Text): data type of field

value, Text or Number: value of property

**SetQueryProperty** queryName, propertyName, dataType, value

Set query property. If property does not exist SetQueryProperty will create it.

queryName, text: query name

propertyName, text: property name

dataType, text (Boolean, Byte, Currency, Date, Double, GUID, Integer, Long, LongBinary, Memo, Single, Text): data type of field

value, Text or Number: value of property

**SetQuerySQL** queryName, SQL

Set query SQL command.

queryName, text: query name

SQL, text: SQL command

**SetRelation** relationName, primaryTable, primaryField, foreignTable, foreignField, attributes, partialReplica

Set database relation.

relationName, text: relation name

primaryTable, text: primary table name

primaryField, text: primary table field name

foreignTable, text: foreign table name

foreignField, text: foreign table field name

**SetTableFieldProperty** *tableName, fieldName, propertyName, dataType, value*  
Set table field property. If property does not exist SetTableFieldProperty will create it.

*tableName*, text: table name

*fieldName*, text: field name

*propertyName*, text: property name

*dataType*, text (Boolean, Byte, Currency, Date, Double, GUID, Integer, Long, LongBinary, Memo, Single, Text): data type of field

*value*, Text or Number: value of property

**SetTableIndex** *tableName, fieldName, ignoreNulls, primary, required, unique, order*  
Set table index with specific settings.

*tableName*, text: table name

*fieldName*, text: field name for index

*ignoreNulls*, boolean (True, False): Ignore Nulls attribute

*primary*, boolean (True, False): Primary attribute

*required*, boolean (True, False): Required attribute

*unique*, boolean (True, False): Unique attribute

*order*, text (ascending, descending): Order attribute

**SetTableIndexDuplicatesOK** *tableName, fieldName*  
Set table index with DuplicatesOK setting.

*tableName*, text: table name

*fieldName*, text: field name for index

**SetTableIndexNoDuplicates** *tableName, fieldName*  
Set table index with NoDuplicates setting.

*tableName*, text: table name

*fieldName*, text: field name for index

**SetTablePrimaryIndex** *tableName, fieldName*  
Set table primary index.

*tableName*, text: table name

*fieldName*, text: field name for primary index

**SetTableProperty** tableName, propertyName, dataType, value

Set table property. If property does not exist SetTableProperty will create it.

tableName, text: table name

propertyName, text: property name

dataType, text (Boolean, Byte, Currency, Date, Double, GUID, Integer, Long, LongBinary, Memo, Single, Text): data type of field

value, Text or Number: value of property